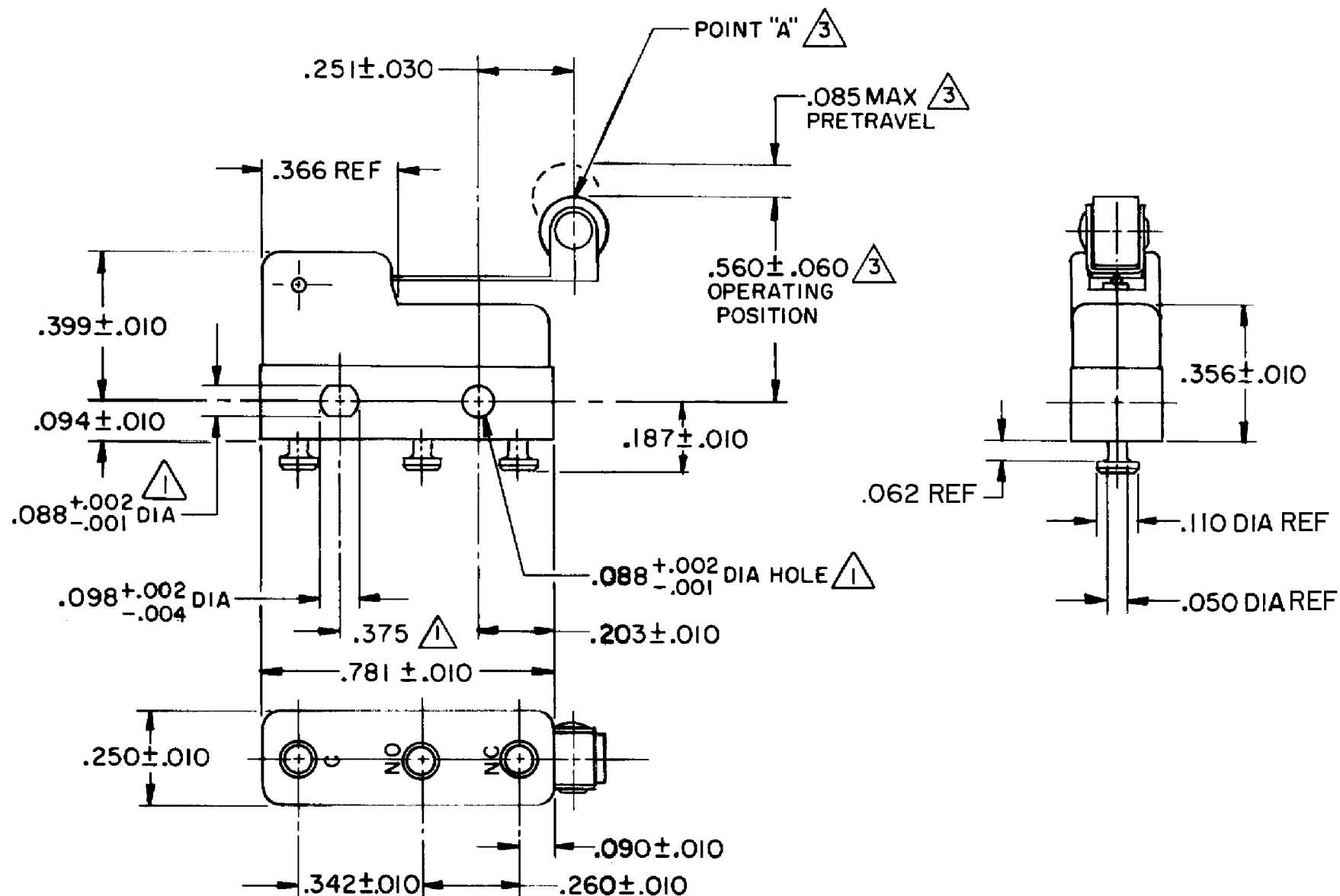
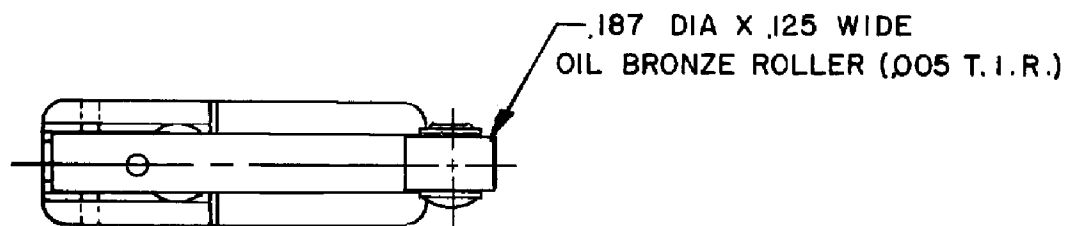


HONEYWELL
PART NUMBER
311SM706-T
PRODUCT CODE
TZA2686

REV	DOCUMENT	CHANGED BY	CHECK
9	0038445	SSK 28APR08	BLR



- NOTES**
- 1 MOUNTING HOLES WILL ACCEPT PINS OR SCREWS OF .087 MAX DIA ON .375 ± .002 CENTERS
 - 2 SWITCH WILL WITHSTAND TEMPERATURE OF 250°F
 - 3 CHARACTERISTICS TAKEN AT POINT "A"
 - 4 TERMINALS ARE PLATED FOR SOLDERING

RELEASE NO.	PR-1059
REPLACES	-

CHARACTERISTICS 3
OPERATING FORCE -- 16 GRAM MAX
RELEASE FORCE -- 3 GRAM MIN
DIFFERENTIAL TRAVEL -- .013 MAX
OVERTRAVEL -- .018 MIN

ELECTRICAL DATA	
CONTACT ARRANGEMENT SPDT	
30 VOLTS DC RATING	
	SEA LEVEL 50,000 FT
INDUCTIVE	3 AMP 2.5 AMP
RESISTIVE	5 AMP 5 AMP
MAXIMUM INRUSH 24 AMP	
APPROVALS	
UL, CSA	4A, 250 VAC
	UL CB BRAND L119

DESIGN UNITS: INCH
TOLERANCES UNLESS NOTED:
NO PLACE X ±
ONE PLACE .X ±
TWO PLACE .XX ±
THREE PLACE .XXX ±
FOUR PLACE .XXXX ±
ANGLES ±
0.030
0.015
0.005
THIRD ANGLE PROJECTION

DRAWN	VK	21FEB 08
CHECK	RJ	21FEB 08
THIS DRAWING COVERS A PROPRIETARY ITEM AND IS THE PROPERTY OF HONEYWELL. THIS DRAWING IS NOT TO BE COPIED OR USED WITHOUT THE PERMISSION OF HONEYWELL.		
INTERPRET PER ANSI Y14.5M-1982 OTHER HONEYWELL ENGINEERING STANDARDS MAY APPLY		
RASTER		

Honeywell			
TITLE SWITCH - BASIC			
SIZE	TYPE	DRAWING NAME	REV
B	I	311SM706-T	9
SCALE	-	WEIGHT .006 LB MAX	SHEET 1 OF 1